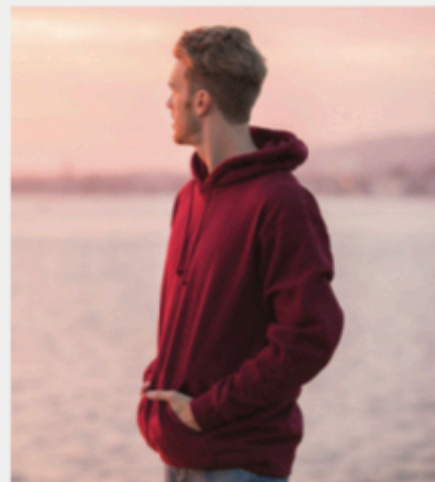


Men's Heavyweight Hooded Pullover



The Original Independent Sweatshirt, the IND4000, is the go-to blank sweatshirt for brands all over the world. Why? It's our combination of quality fabric, construction, colors, print-ability, and a consistency in production that has been forged from over 30 years of manufacturing this classic style. We use premium ring-spun cotton 3-end fleece to achieve a smooth and stable fabric surface for printing. This premium heavyweight garment has a generous fit and is completed with a fleece lined hood, heavy gauge round drawcord, nickel eyelets, and 1x1 ribbing at cuffs and waistband.

Sizes: XS-3XL
 (4XL & 5XL available in select colors.)

- 10 oz (330 gm) cotton/polyester blend 3-end fleece
- ring spun cotton
- Solid Colors: 70% Cotton/30% Polyester with 100% cotton 32 singles face yarn
- Heather Colors: 52% Cotton/48% Polyester (Charcoal Heather, Gunmetal Heather, Grey Heather)
- Camo Colors: 75% Cotton/25% Polyester with 100% cotton 32 singles face yarn (Forest Camo, Black Camo, Tiger Camo, Army Camo & Snow Camo)

- Safety Colors: 52% Cotton/48% Polyester overall fabric content with 65% Polyester/35% Cotton face yarns (Safety Yellow, Safety Orange)
- Fleece lined hood
- Split stitch double needle sewing on all seams
- Twill neck tape
- Tear away neck label
- 1x1 ribbing at cuffs and waistband
- Nickel eyelets
- Generous fit



Black, Charcoal Heather, Solid Charcoal, Gunmetal Heather, Grey Heather, White, Classic Navy, Slate Blue, Maroon, Currant, Alpine Green, Army, Saddle, Sandstone, Bone, Peach, Light Yellow, Mint, Blue Aqua, Lavender, Light Pink, Cardinal, Red, Royal, Gold, Dark Green, Forest Camo, Tiger Camo, Army Camo, Snow Camo, Black Camo, Charcoal Heather/Black, Charcoal Heather/Currant, Grey Heather/Black, Grey Heather/Slate Blue, Grey Heather/Currant, Safety Yellow, Safety Orange

SMOOTH GEAR, LLC

4110 MAIN STREET
PO BOX 146
SLATEDALE, PA 18079
WWW.SMOOTHGEAR.NET

610-751-8381
CONTACT@SMOOTHGEAR.NET

Screenprint	PRINT COLORS	FROM TO	12 24	25 49	50 74	75 99	100 249	250 499	500 999	1000 Plus
	1		\$ 27.70	\$ 25.89	\$ 24.87	\$ 22.14	\$ 21.13	\$ 20.13	\$ 19.28	\$ 19.24
	2		\$ 31.53	\$ 27.97	\$ 26.07	\$ 22.95	\$ 21.77	\$ 20.51	\$ 19.55	\$ 19.46
	3		\$ 35.36	\$ 30.06	\$ 27.26	\$ 23.76	\$ 22.40	\$ 20.90	\$ 19.83	\$ 19.68
	4		\$ 39.19	\$ 32.15	\$ 28.46	\$ 24.57	\$ 23.04	\$ 21.28	\$ 20.11	\$ 19.89
	5		\$ 43.02	\$ 34.23	\$ 29.66	\$ 25.39	\$ 23.67	\$ 21.66	\$ 20.38	\$ 20.11
	6		\$ 46.86	\$ 36.32	\$ 30.86	\$ 26.20	\$ 24.30	\$ 22.05	\$ 20.66	\$ 20.33

- Prices above are for sizes Small – X Large.
- For sizes 2XL and 3XL, please add \$5.00 per garment to the price above.
- For size 4XL and up, please contact to confirm price.
- All prices above include all set-up, printing, garments and shipping/delivery (within USA).
- Turnaround time from when order is placed to time of shipment/delivery is on average 2 weeks.
- Deposit of 50% of final cost due at time of order.
- Payment of balance is due upon receipt/delivery.
- Payment received 30 days or more after delivery subject to 10% interest added to amount due.
- PA sales tax of 6% added to final price.
- Rush order fee is \$250 (if order is needed within less than 2 weeks time).
- To add custom screen-printed size tags, please add \$1.00 per garment
- To add custom heat pressed size tags, please add \$1.00 per garment.
- To add Smooth Gear branded heat pressed size tags to your garment, there is no additional charge.
- All prices/conditions subject to change.
- Contact us with any questions.